



## *Company Profile*



***Total Package, Design & Built, for Pneumatic Conveying & Powder Processing***

***Power & Bulk Processing & Monitoring of***

***Bulk & Powder Material Silo Managing System***

***Bulk & Powder Raw Material Receipting System***

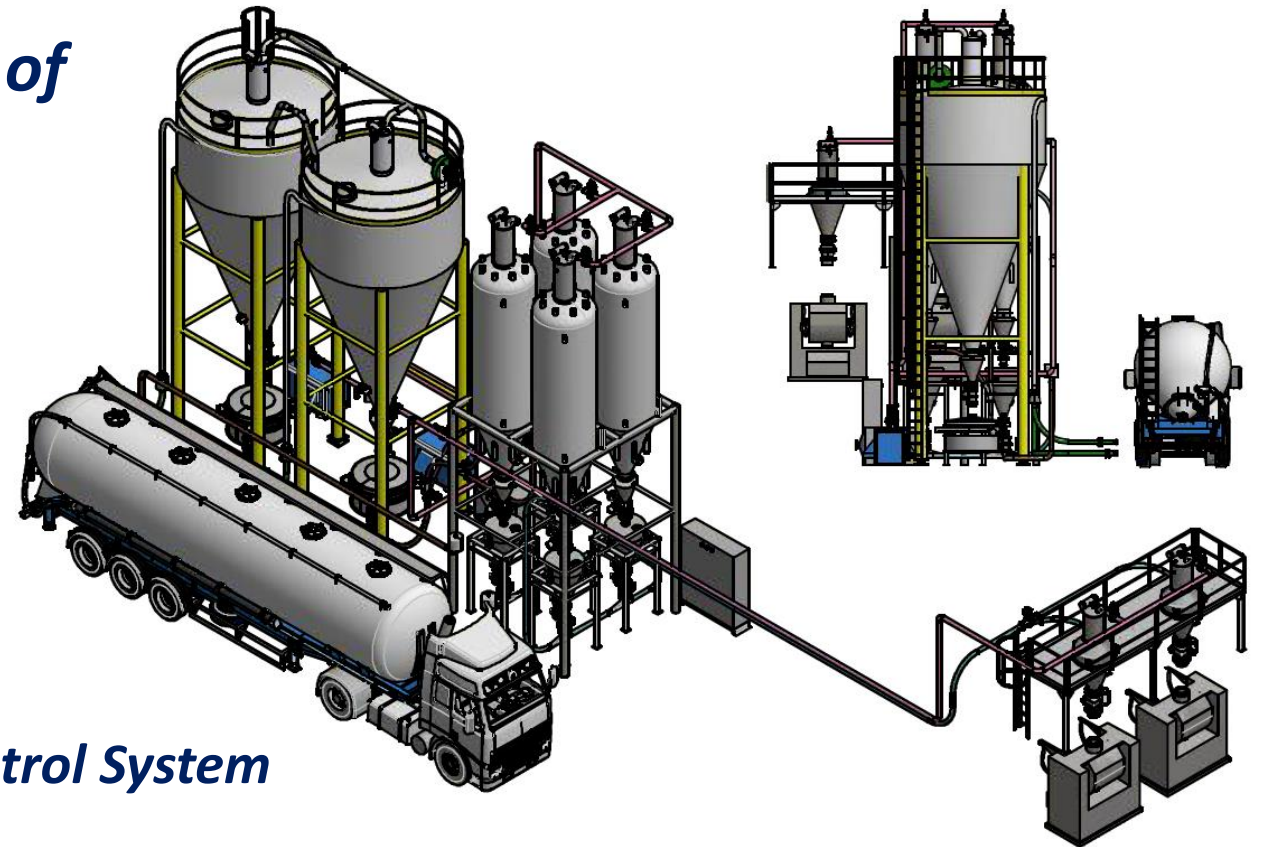
***Raw Material Weighting System***

***Powder Mixing & Screening System***

***Extruding Material Handling System***

***Bulk & Powder Material Bag Filling System***

***Bulk & Powder Material Production Process Control System***



# ***Pneumatic Conveying System of***

***Silo Loading & Unloading System***

***Bulk Truck Loading & Unloading System***

***Big Bag & Small Bag Unloading System***

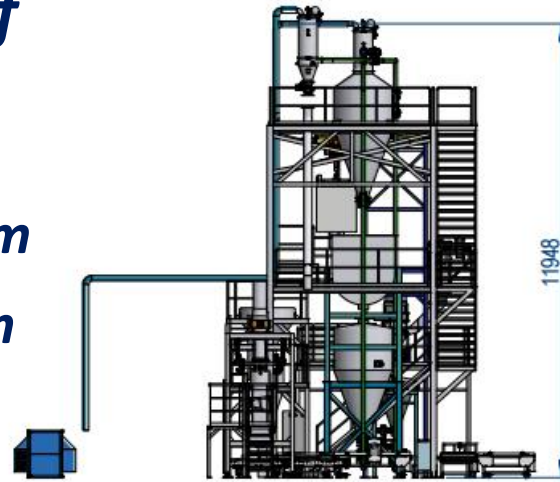
***Mixer Loading & Unloading System***

***Tote Bin Loading & Unloading System***

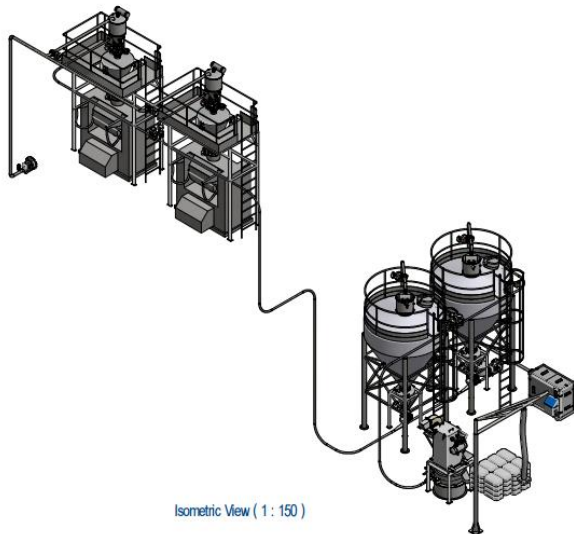
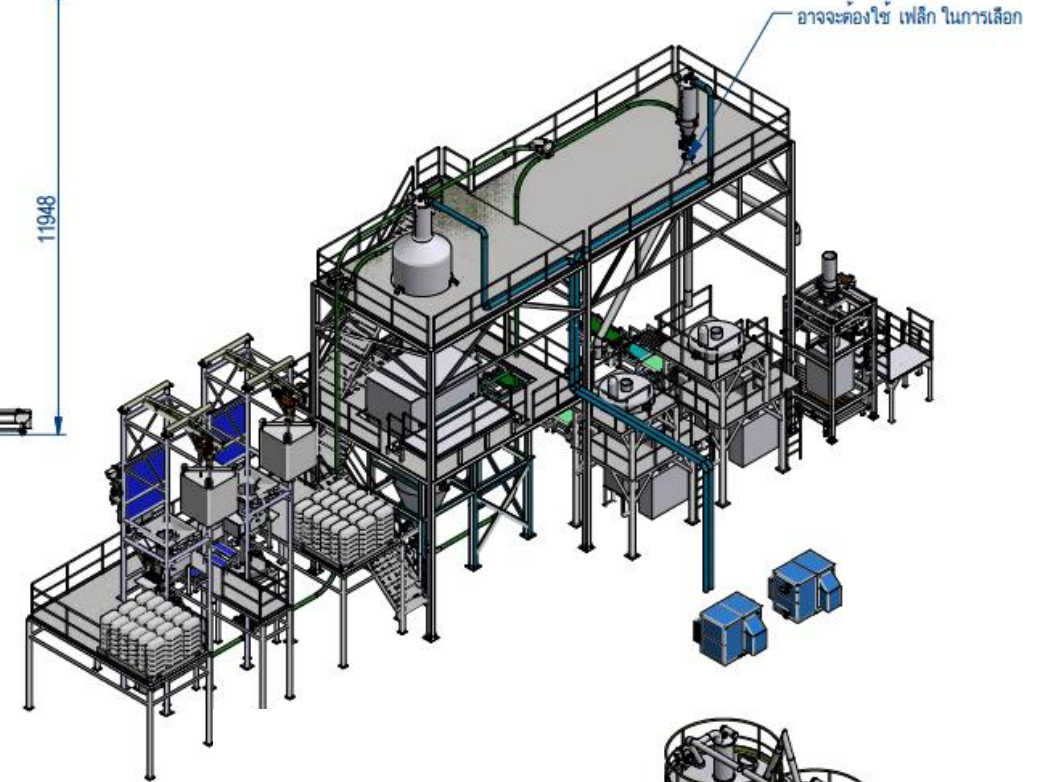
***Extruder Loading System***

***Packing & Filling Machine Loading System***

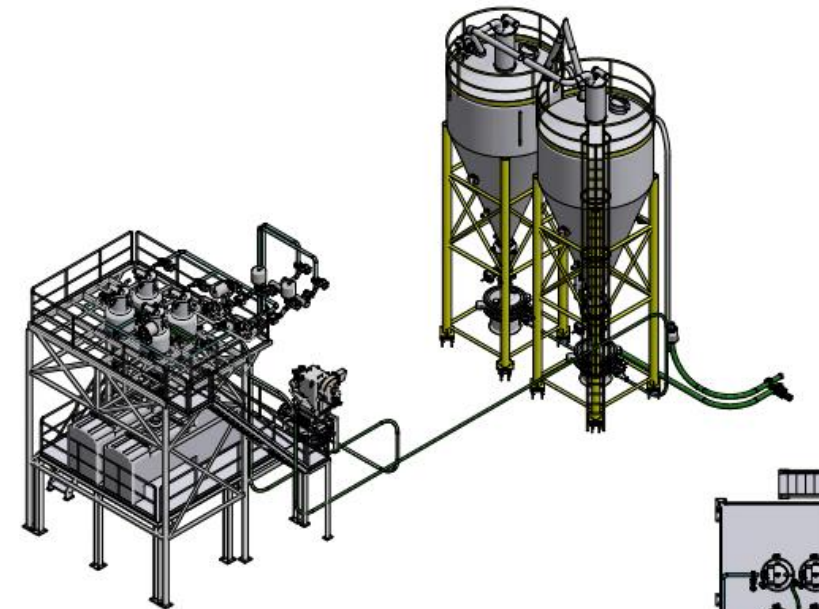
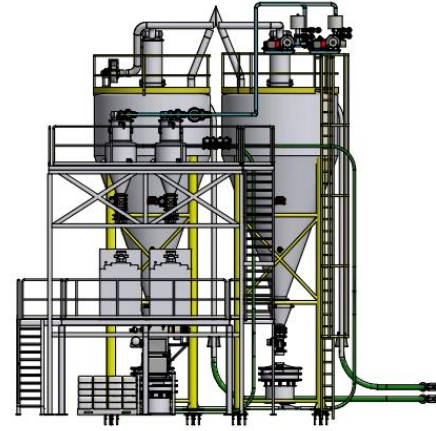
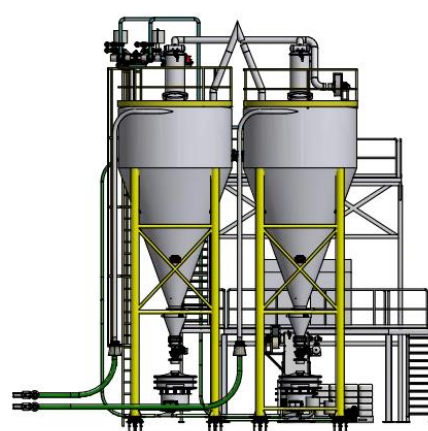
***Production Line & Production Machine Loading System***



Isometric View ( 1 : 200 )



Isometric View ( 1 : 150 )





# ***Total Package, Design & Built, for Plastic Powder & Pellet Handling Process***

***Plastic Sea Bulk Loading / Container Loading / Bulk Truck Loading / Big Bag Filling & Weighting System***

***Plastic Bulk Truck Unloading / Container Unloading / Big Bag & Small Bag Unloading System***

***Plastic Tank & Silo Loading, Unloading and Weighting System***

***Plastic Manufacturing Process, Powder & Pellet Pneumatic Conveying & Weighting System***



# ***Total Package, Design & Built, for Plastic Powder & Pellet Handling Machine***

***Silos / Tanks / Hopper / IBC Bin / Receiver /Dumper / Bag Filter / Cyclone, Maker***

***Big Bag Unloading Station / 25 kg Bag Dumping Station / Tote Bin (INC BIN) Unloading Station, Maker***

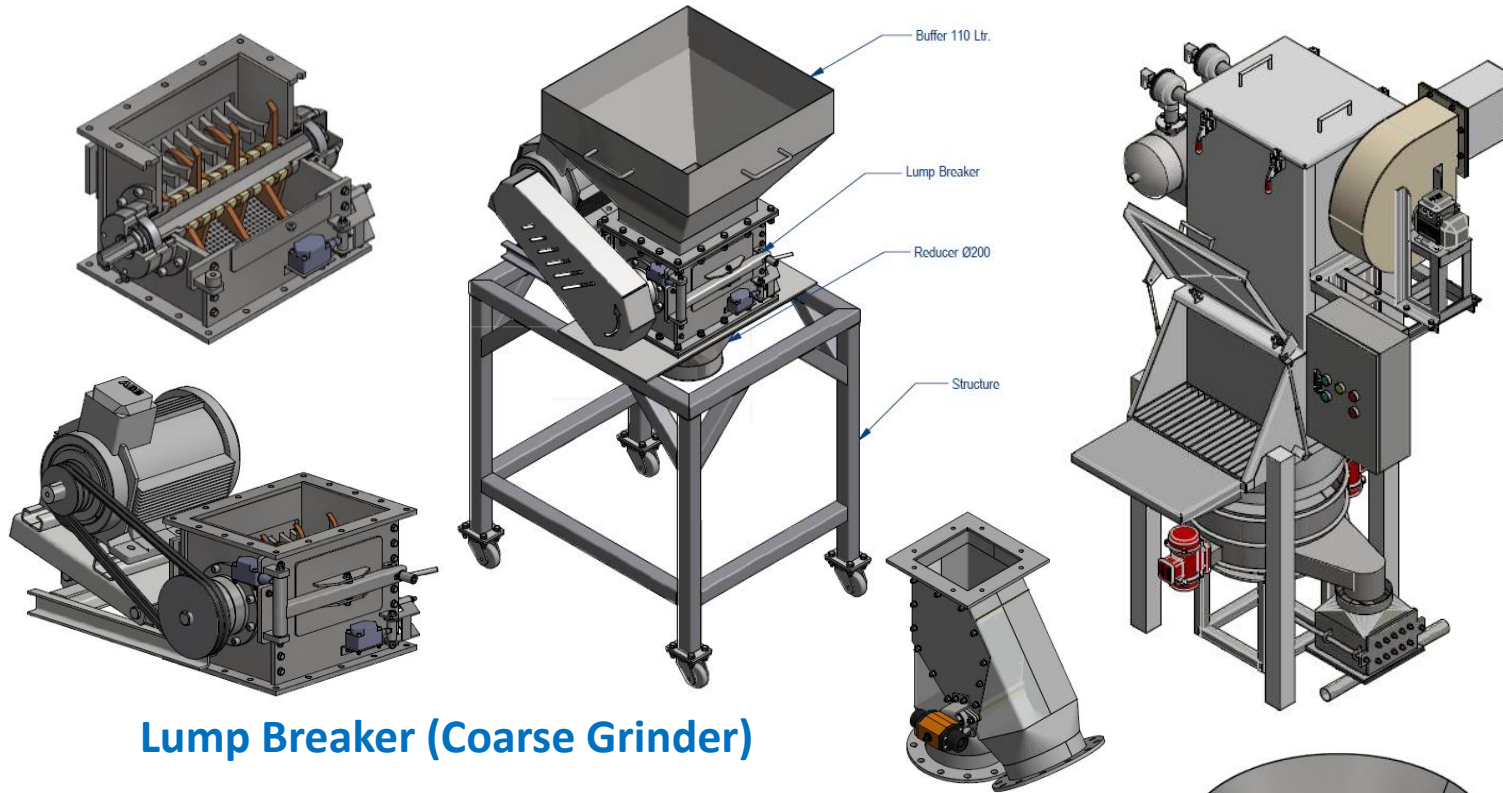
***Big Bag Filling Machine / 25 kg Bag Filling Machine / Process Weighting Station, Maker***

***Pneumatic Conveying Component, Rotary Valve / Diverter Valve / Lump Breaker / Blower Package, Maker***

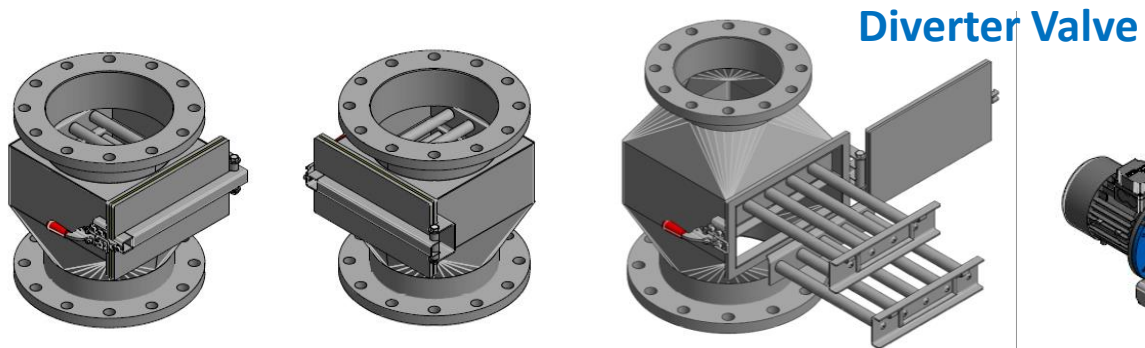




# Powder Handling Machine & Component



**Lump Breaker (Coarse Grinder)**

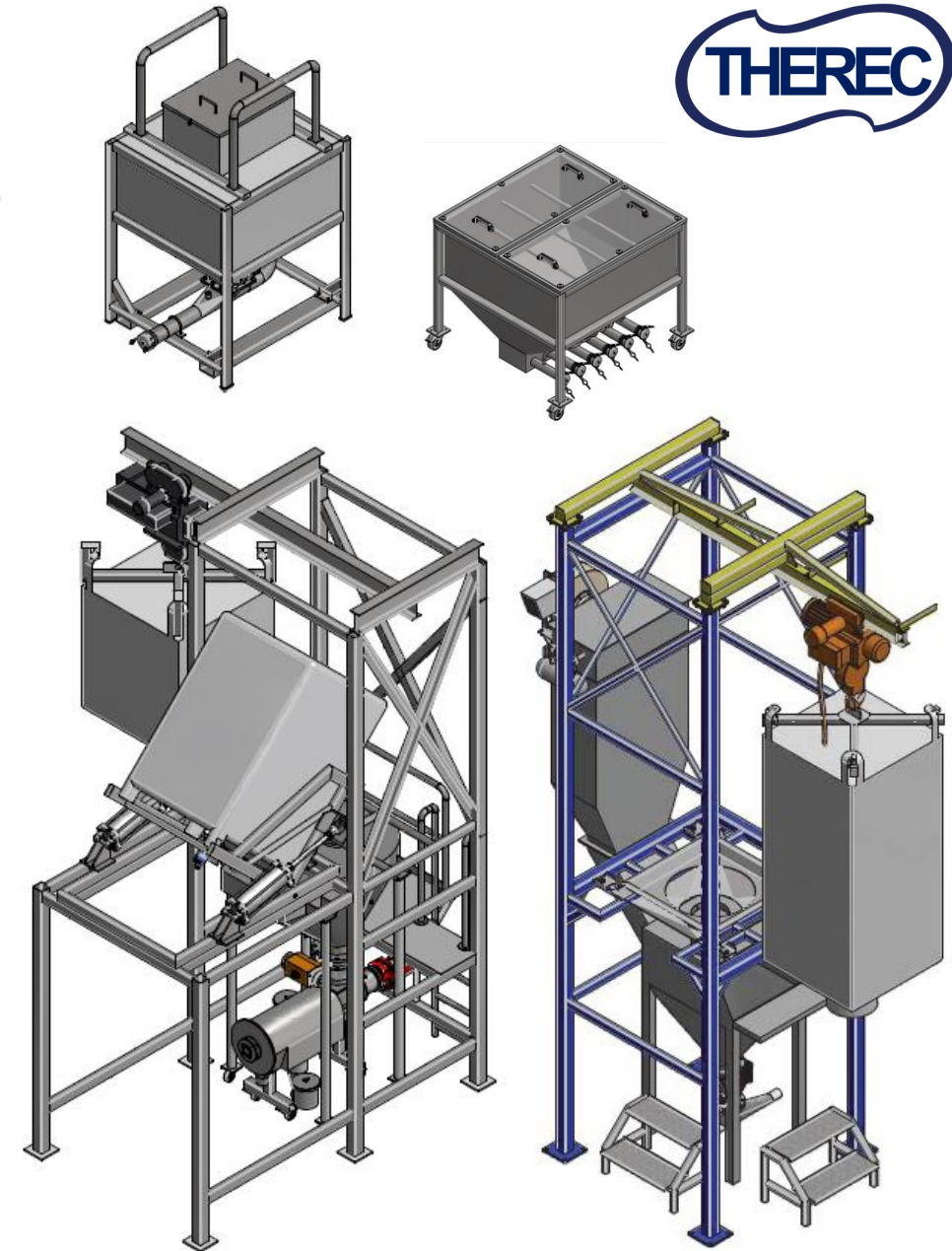


**Diverter Valve**

**Magnetic Separator**



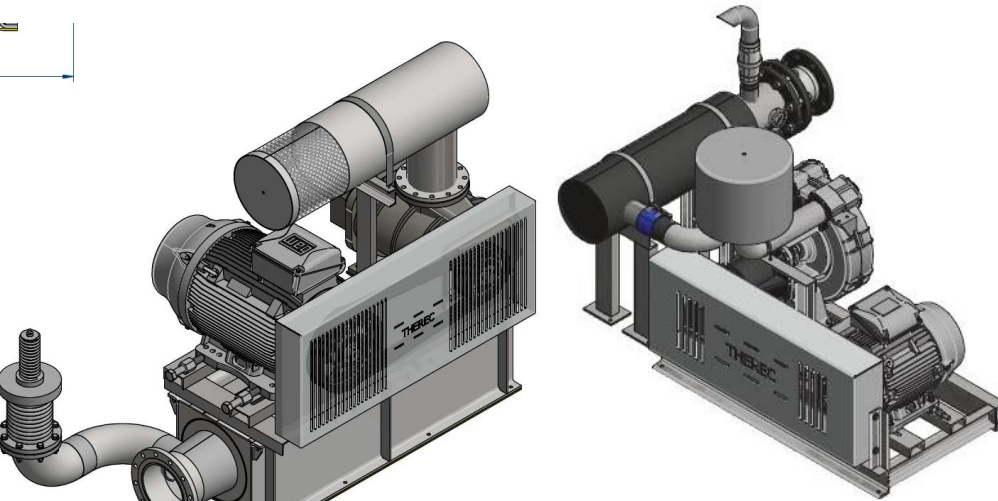
**Bridge Breaker**



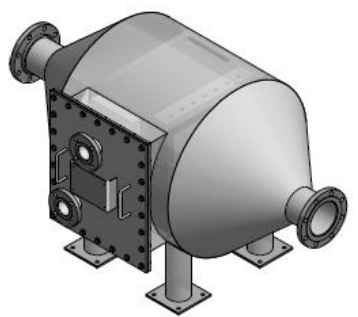
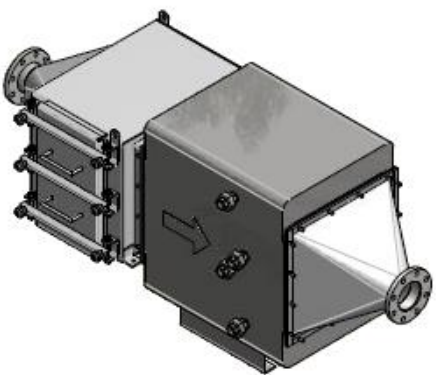
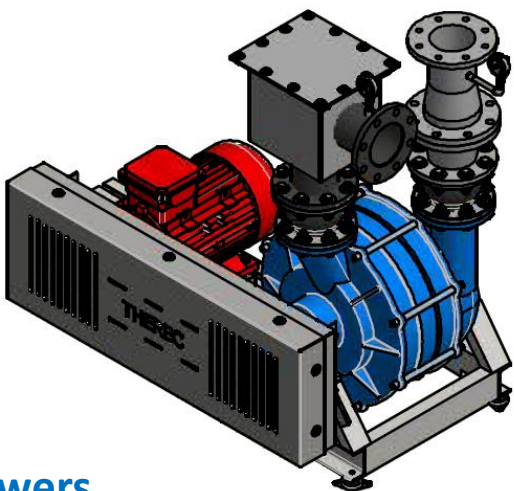
**Bag & Bin Unloading Station**



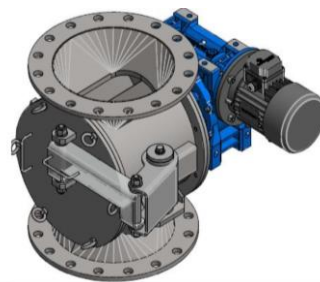
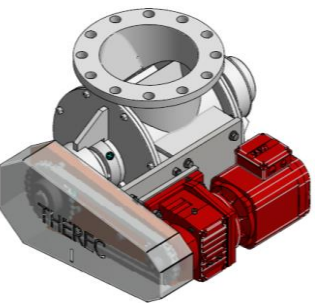
# Pneumatic Conveying Machine & Component



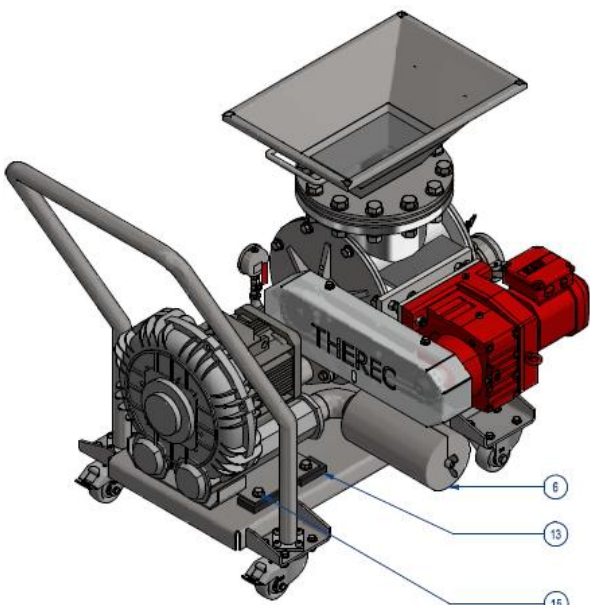
Roots, Ring & Centrifugal Blowers



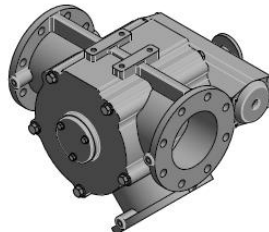
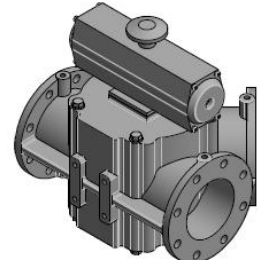
Air Cooler, Filter & Dryer



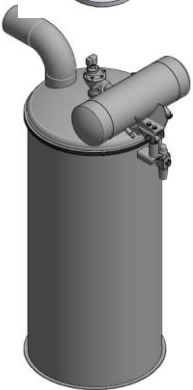
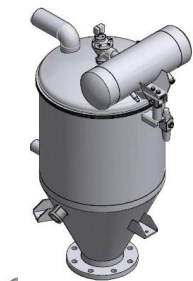
Air Lock Rotary Valve



Tube, Bend, Ejector & Coupling



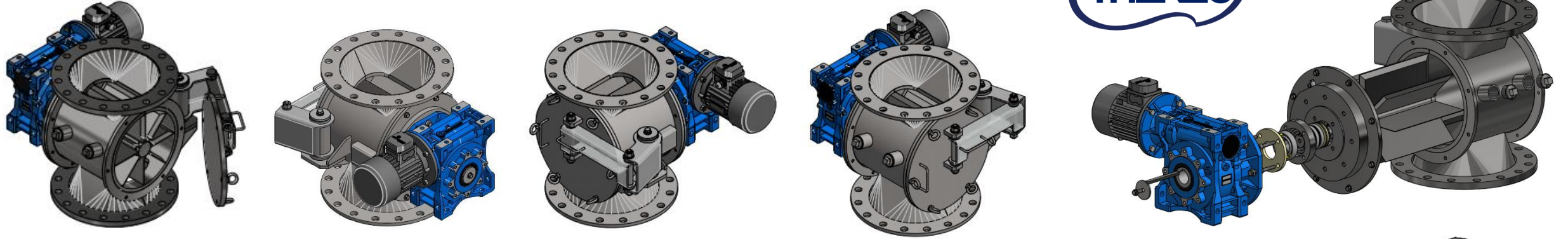
Diverter Valve



Bag Filter & Cyclone



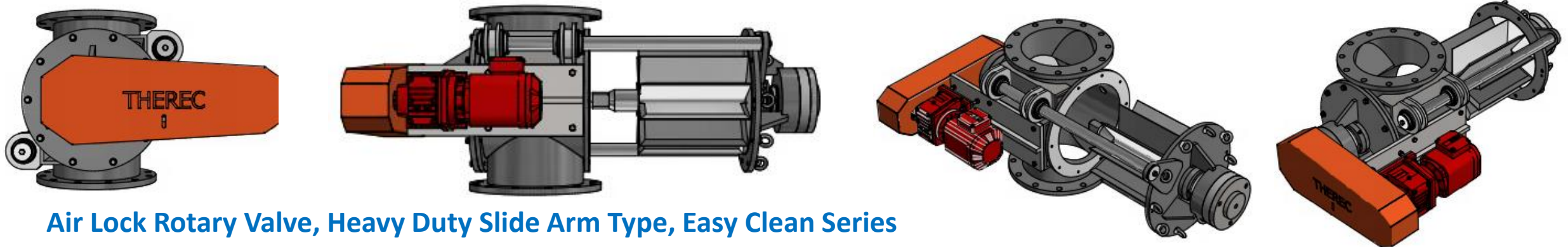
## *Food Grade Easy Clean Rotary valve*



### *Air Lock Rotary Valve, Compact Type, Easy Clean Series*



### *Air Lock Rotary Valve, Compact Dosing & Weighting Type, Easy Clean Series*

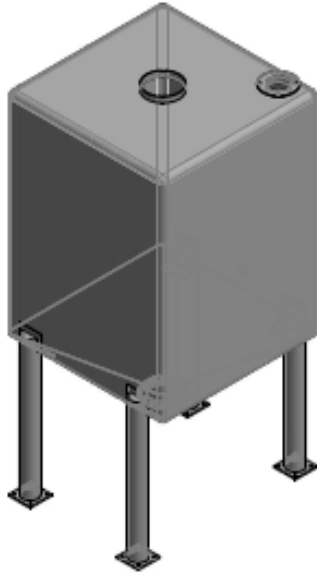
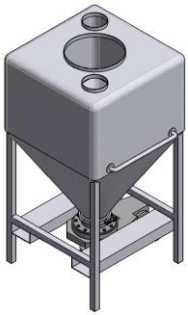


### *Air Lock Rotary Valve, Heavy Duty Slide Arm Type, Easy Clean Series*

# ***Powder and Bulk Material Hopper Bin & Silo***



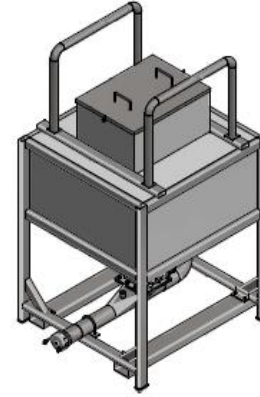
**Tote Bin**



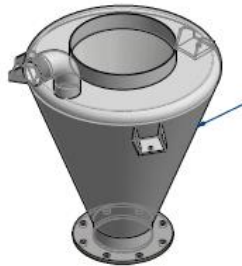
**Storage Bin**



**Mobile Storage Bin**



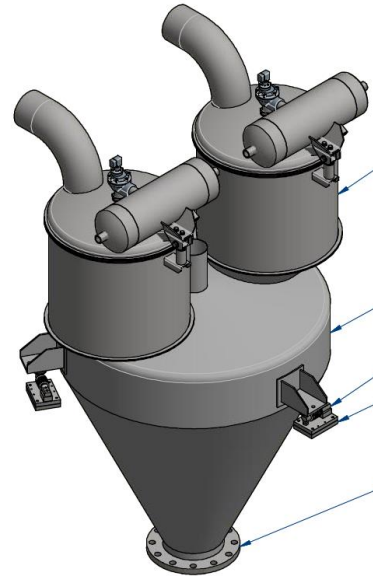
**Dumping Bin**



**Surge Hopper**



**Weighting Hopper**



**Receiving Hopper**



**Storage Hopper**



**Buffer Silo**

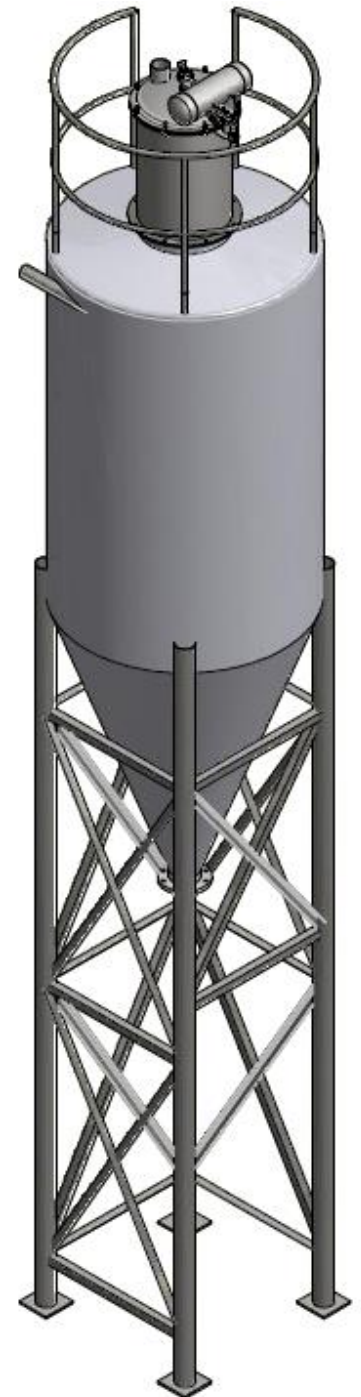
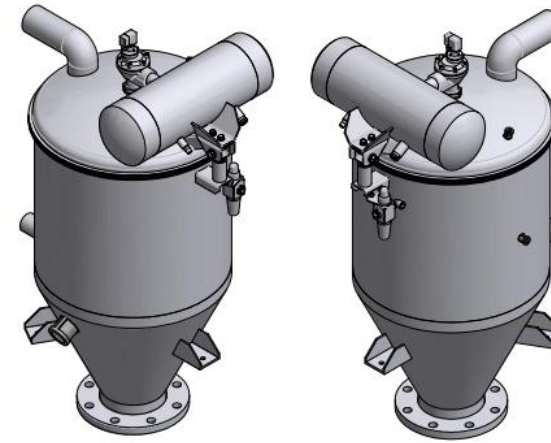
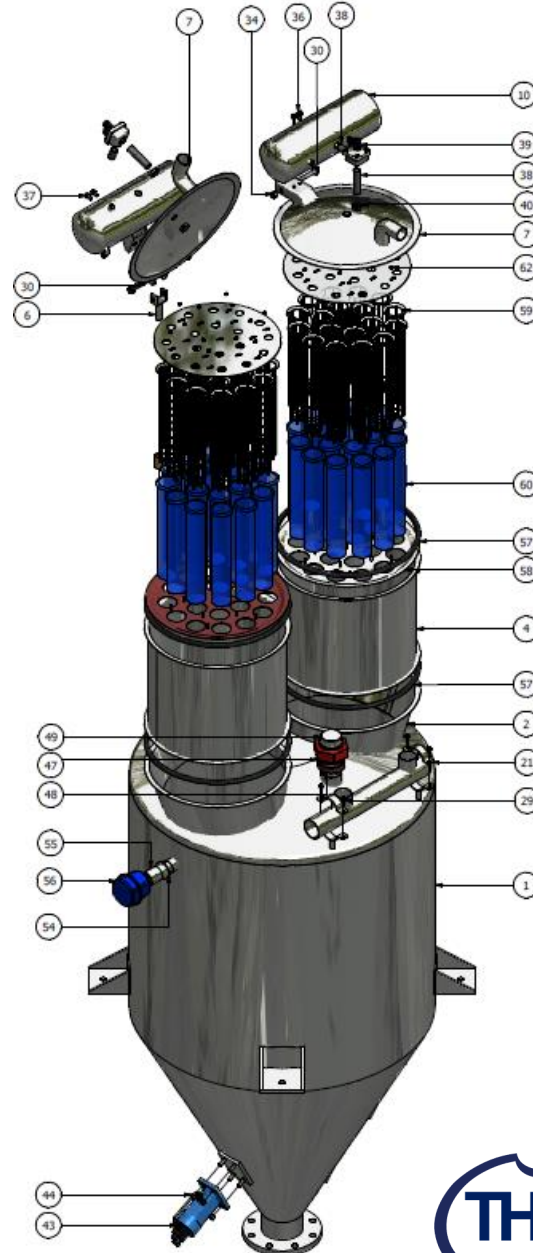
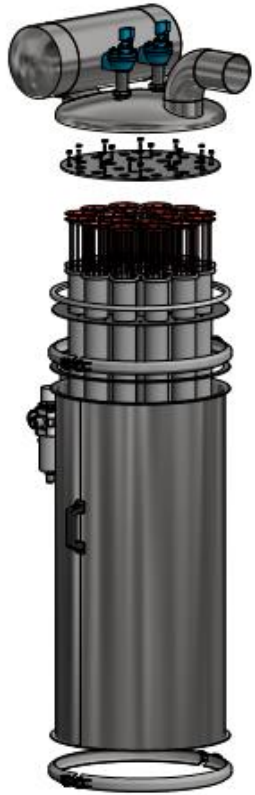


**Main Storage Silo**



# Food Grade Easy Clean Bag Filter

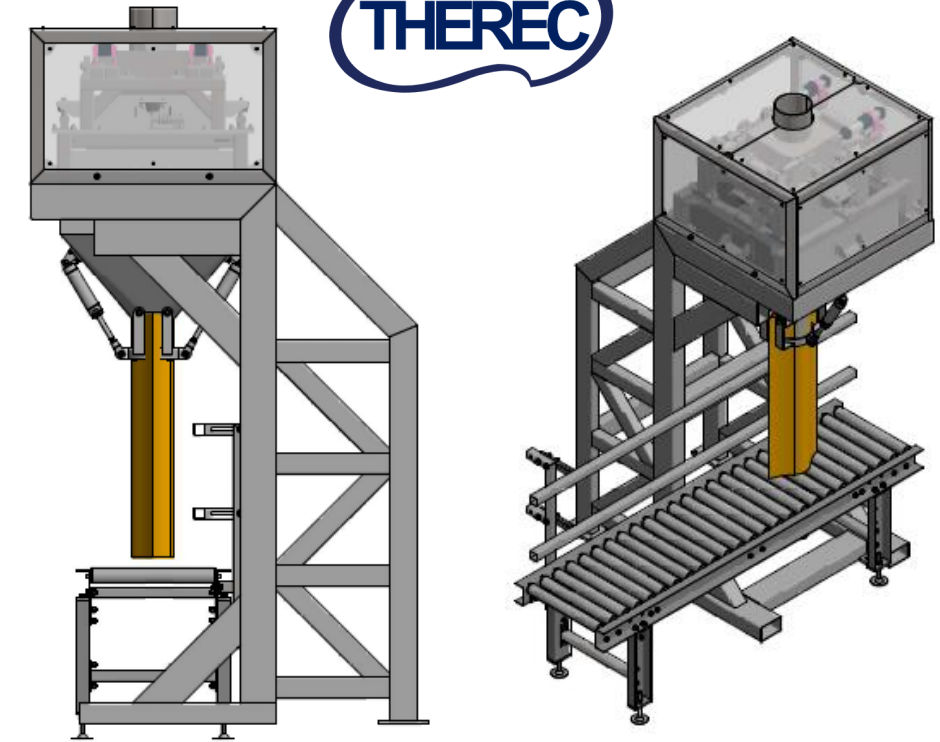
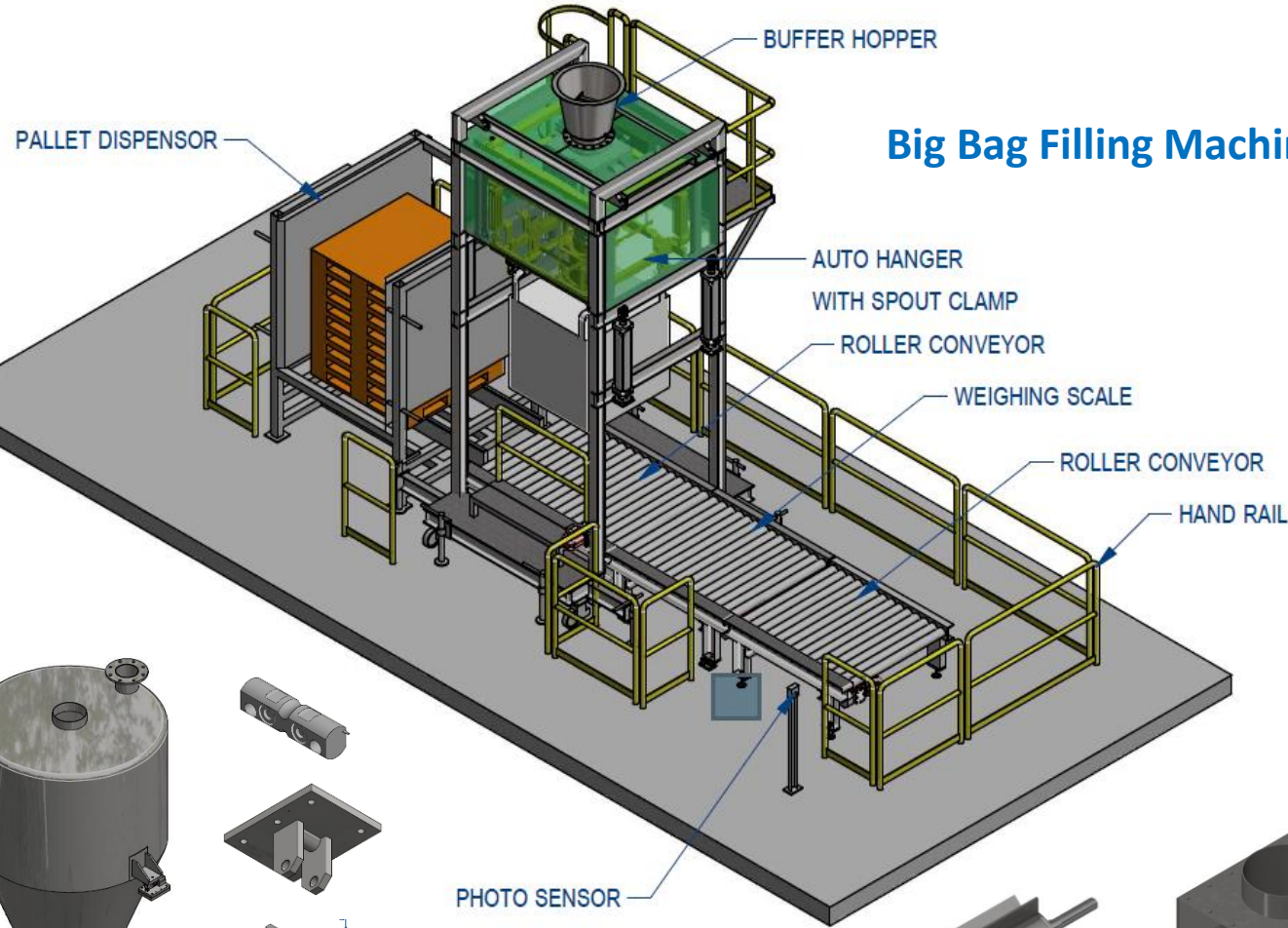
- Easy Detachable Structure
- Round & Compact Filter
- Clean Easier by Jet Pulse
- Strong Robust Round Body
- Deep Vacuum Operation
- Light Weight
- Food Grade Design
- Polished Internal Surface
- Quick Clamping System



# Filling & Weighting Machine & Component

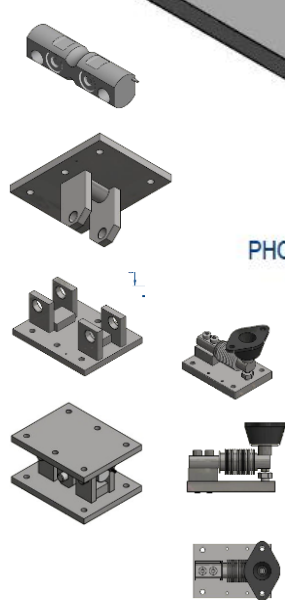


## Big Bag Filling Machine

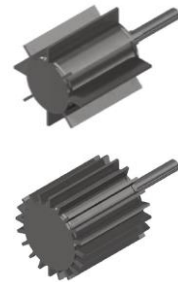


## 25 kg Bag Filling Machine

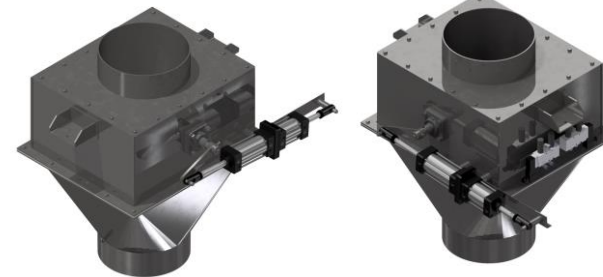
## Weighting Hopper & Load Cell



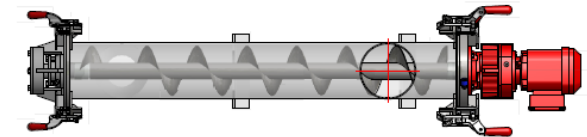
## Dosing Rotary Valve



## Cut-Off Valve

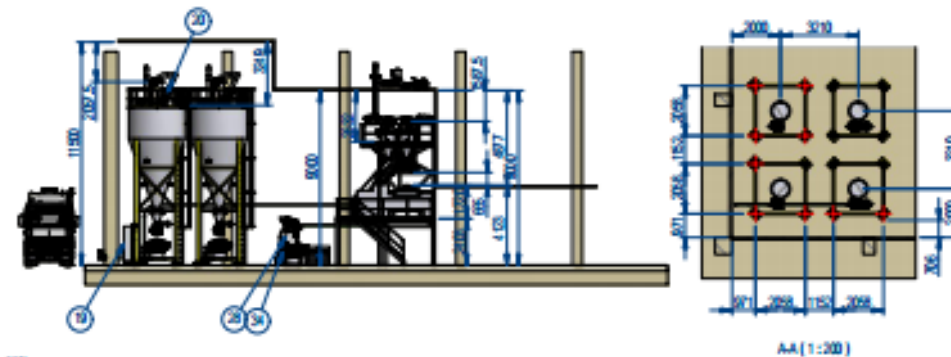
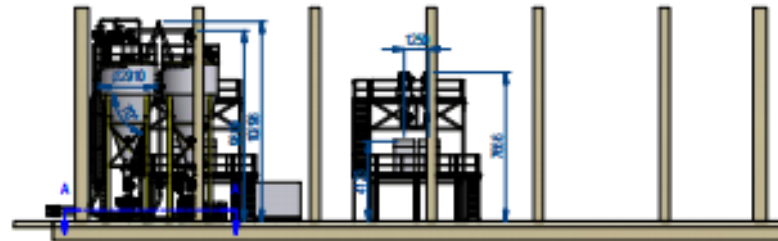
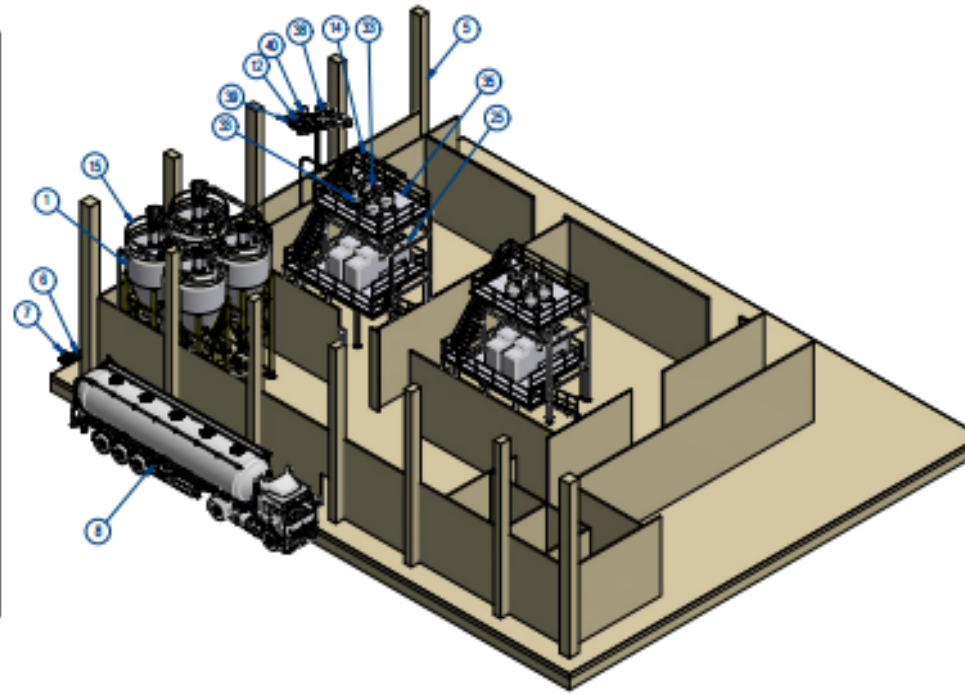


## Dosing Screw Conveyor



## Weighting & Dosing Equipment





AA[1:200]

Rev.	Rev. Description	Date	By	Approve

PROJECT :

Therac Corporation Ltd.  
Bangkok, THAILAND  
Tel: (662) 638 9005-6 Fax: (662) 638 9005  
e-mail: [sales@theracorp.com](mailto:sales@theracorp.com) <http://www.theracorp.com>

**Design Copyright:** The information contained in this document is the property of THERAC, Inc. It, and may not be made use of or communicated to third parties without written permission.

Design	Samrat C.	Model :	Rev :
Date	28-Aug-24	DRAWING TITLE Pneumatic Conveying System_Ans	
Checked	PODIPUT T.		
Date			
Scale	(Unit : mm)	DRAWING NUMBER : A3-24-OCT-PCS-RED-7-Profile-01	

11 September 2024



# Imported Represented Product

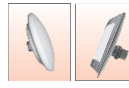


**ROOTS**

**IR Ingersoll Rand.**



**MORRIS**  
COUPLING COMPANY



**DMN**  
WESTINGHOUSE



**MIX S.r.l.**  
MIXING SYSTEMS AND  
COMPONENTS FOR PLANTS



**FPZ**  
BLOWER TECHNOLOGY

**ATEX**



**SODECA**

Explosive atmospheres ATEX



**CHSUN**



**FineTek**  
Innovation · Quality · Sharing



**FineTek**  
Innovation · Quality · Sharing

**mütec**  
Instruments



**SAVIO S.r.l.**  
AIR TECHNOLOGY

**ATEX**



**VOLKMANN**  
IDEAS AHEAD



**Thames Side**

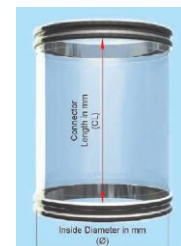


**stif**

**VIGILEX**



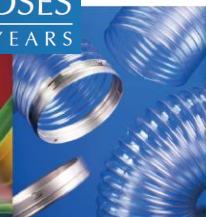
**ATEX**  
INTERNATIONAL



**BFM**  
fitting  
"Keeping You Connected"



**QUALITY HOSES**  
FOR OVER 65 YEARS



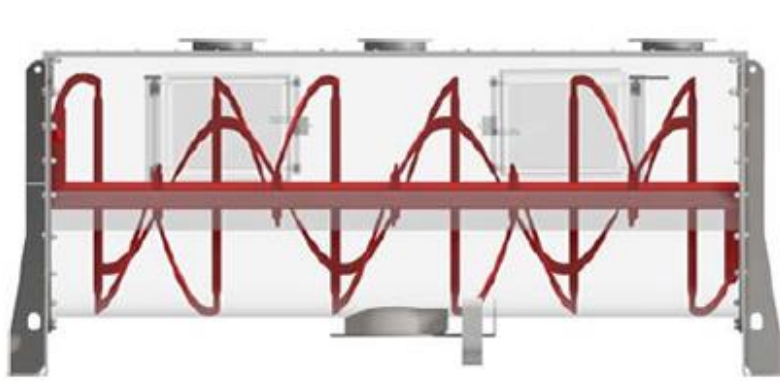
**FLEXAUST**  
Flexible Hose • Ducting • Accessories



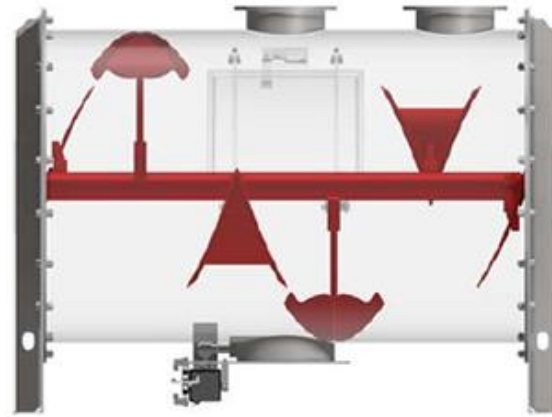
# Powder and Bulk Material Mixer & Screener Imported Product



MIX S.r.l.  
MIXING SYSTEMS AND  
COMPONENTS FOR PLANTS



Screw (Ribbon)



Ploughshare



Mix Paddle



Food Grade Easy Clean Mixer



Lab Scale Ribbon & Paddle Mixer



Vibro Separator

NAVECTOR  
— 纳维加特 —



The 30<sup>th</sup> Year of  
Solution & Service



-1997 Start the journey of  
being the official distributor  
of **Dresser Holmes Roots UK**  
the original Roots blower

-1999 Being Distributor of  
**DMN Westinghouse / Netherland**  
Rotary & Diverter valve  
-First Pneumatic Conveying Project  
First Bulk Bag unloading station  
in-house design and made  
For Sugar / syrubb making  
**Dutched Mill Co.,Ltd.**



-2002 First TRC Diverter valve  
in-house design and made  
For pneumatic handling system  
**Thai Wah Food Co.,Ltd.**

-2004 First food grade  
stainless steel silo for  
milk powder  
**Diry Plus Co.,Ltd.**



-1993 Starting of  
**Siam Complex Technology Co.,Ltd.**  
Stainless steel piping contractor  
& Food processing Company

-1996 Established year of TRC  
Imported High Pressure Blowers  
Sales & Service Company  
**Therac Corporation Ltd.**

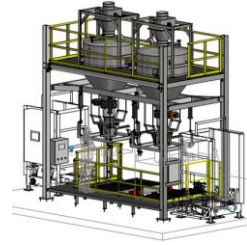
-1998 Start to be the distributor of  
**Young Industry Inc. USA**  
Bulk material Handling Turn-Key company  
-Start our own work shop to do  
The Blower Package locally  
Only imported the bare shaft unit from USA

-2000 First TRC rotary valve  
for pneumatic conveying system  
in-house design and made  
**BKK Waste Water Treatment  
Plant / Dindeang**



-2005 The first Central Vacuum  
Cleaning System, by THEREC  
in-house design and made  
**Siam Yamato Co., Ltd**

-2007 New work shop in Bangbon  
Machining and Fabrication shop  
Machine Service Center  
-Start to work as the distributor  
of **J&D Silo / Netherland**  
For plastic pellet Aluminium Silo



-2015 First Automatic  
High Speed Big Bag Filling machine  
Design and Made By THEREC  
**TPE / SCG Plastic group**

-2013 Start TRE work shop  
For Bulky Structure in  
Nikompatana Rayong  
-First project sales of  
**J&D Silo / Netherland**  
For plastic pellet Aluminium Silo  
4 units of 200 m3 Stand-Riv Silos



-2024 Get the good start of success to  
get the project abroad in Laos, Vietnam  
and New Zealand

-2020 Starting to focus on design and  
built process turn-key business  
With nearly all of the equipment and  
machine import and produce by our  
companies / Serious Trying to looking  
for the opportunity to expand the  
market abroad

-2019 The first Sea bulk  
loading system, for PE pellet  
Oversea Turn-key project  
**Petron / Philippine**



-2014 Separate the fabricate  
section of TRE to be new company  
For Stainless steel work / Hopper & Silo  
Start TRT work shop in Nontaburi  
**TRT Factory Co.,Ltd.**



-2012 Separate the project  
department to be new company  
**Therac Engineering Co.,Ltd.**

-2008 The first Sea bulk  
loading system, for PE pellet  
in-house design and made  
**TPE / SCG Plastic group**

## THEREC CORPORATION LTD.

88 Soi Karnjanapisek 4/2 (Bangbon Village)

Khlong Bangbon, Bangbon, Bangkok 10150

Tel.02-8939003-4 Hp.081-7002779

E-mail : [sales\\_trc@thereccorp.com](mailto:sales_trc@thereccorp.com)

## THEREC ENGINEERING & CONSULTING CO.,LTD.

121/2 Soi 4 Nikompattana 13 Rd.

Nikomattana , Rayong 21180

Tel.02-8939003-4 Hp.081-7002779

E-mail : [sales\\_tre@thereccorp.com](mailto:sales_tre@thereccorp.com)

## TRT FACTORY CO.,LTD.

88 Soi Karnjanapisek 4/2 (Bangbon Village)

Khlong Bangbon, Bangbon, Bangkok 10150

Tel.02-8939003-4 Hp.081-7002779

E-mail : [sales\\_tre@thereccorp.com](mailto:sales_tre@thereccorp.com)

